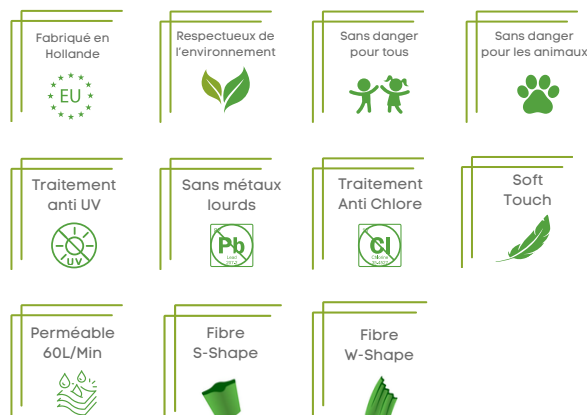


## Angora - 45mm



### CARACTERISTIQUES

<b>TYPE</b>	Monofilament droit + Monofilament frisé	<b>HAUTEUR DE FIBRE</b>	45 mm (±5mm)
<b>TRAME</b>	Latex	<b>POINTS LM</b>	13/10cm (± 5%)
<b>RESILIENCE</b>	24 700 Dtex	<b>POINTS AU M<sup>2</sup></b>	18.190 (± 10%)
<b>JAUGE</b>	5/8	<b>POIDS FIBRES</b>	2.500 gr/m <sup>2</sup> (± 10%)
<b>GARANTIE</b>	Meets DIN 53387 Standart - 1000KLY	<b>POIDS TOTAL</b>	3.600gr/m <sup>2</sup> (± 10%)